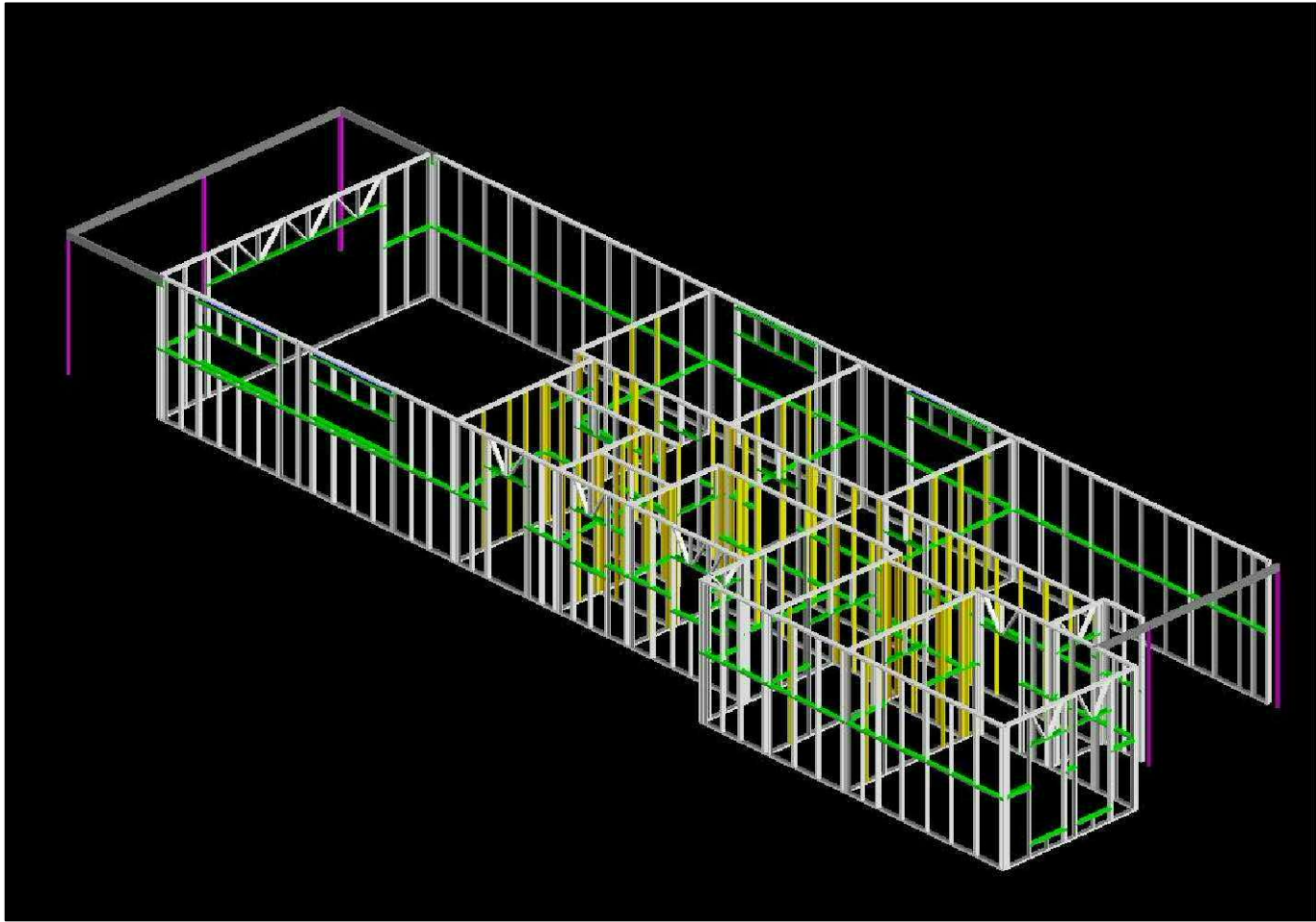


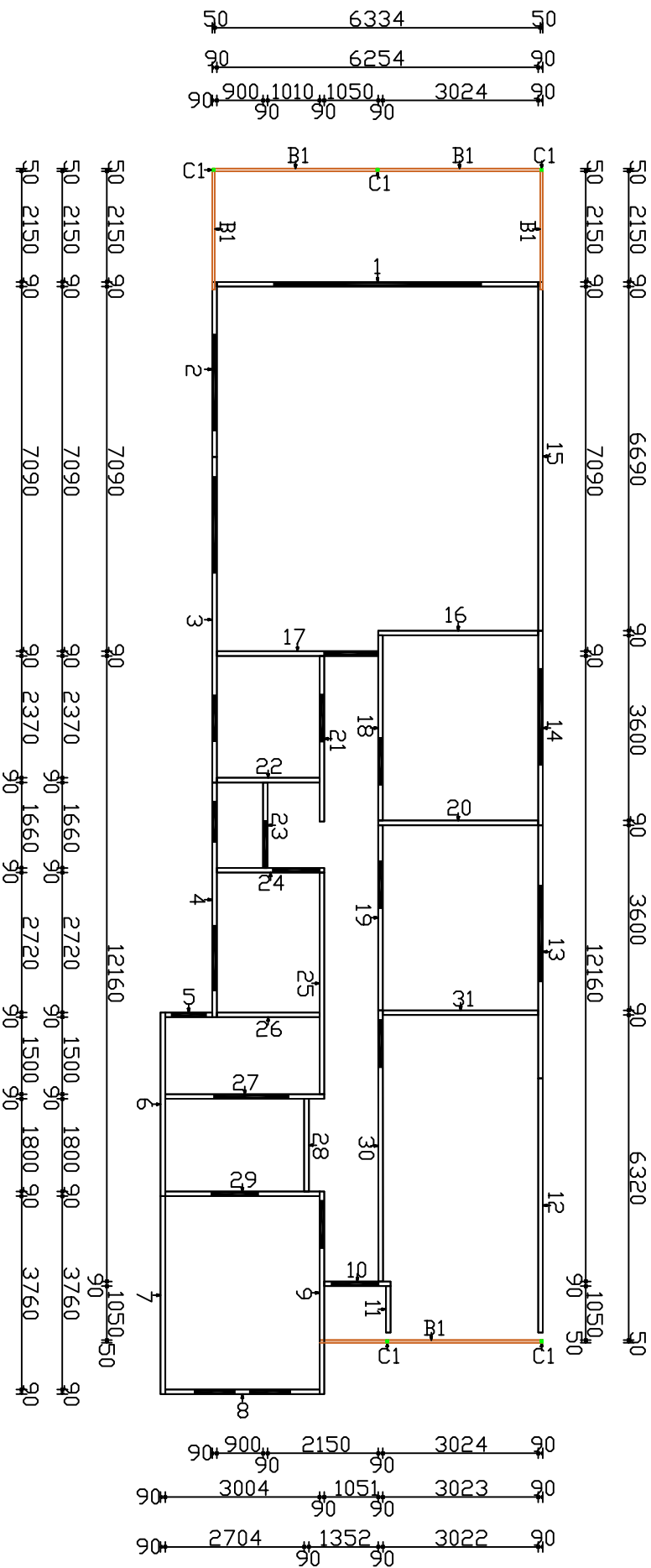
BEAM DETAILS

B1 - RHS-150x50x2.0
C1 - SHS 50x50x1.6



ADDITIONAL NOTES

ARROWS SHOW THE DIRECTION
THE WALLS ARE VIEWED FROM
CHALK OUT SLAB USING ARCHITECTURAL
DRAWINGS NOT TSF LAYOUTS



NO.	DATE:	BY:	REVISION:
1			
2			
3			
4			



31 HEWITTSON RD, EDINBURGH NORTH 5113
SITE ENQUIRIES - Ph: (08) 8252 0046

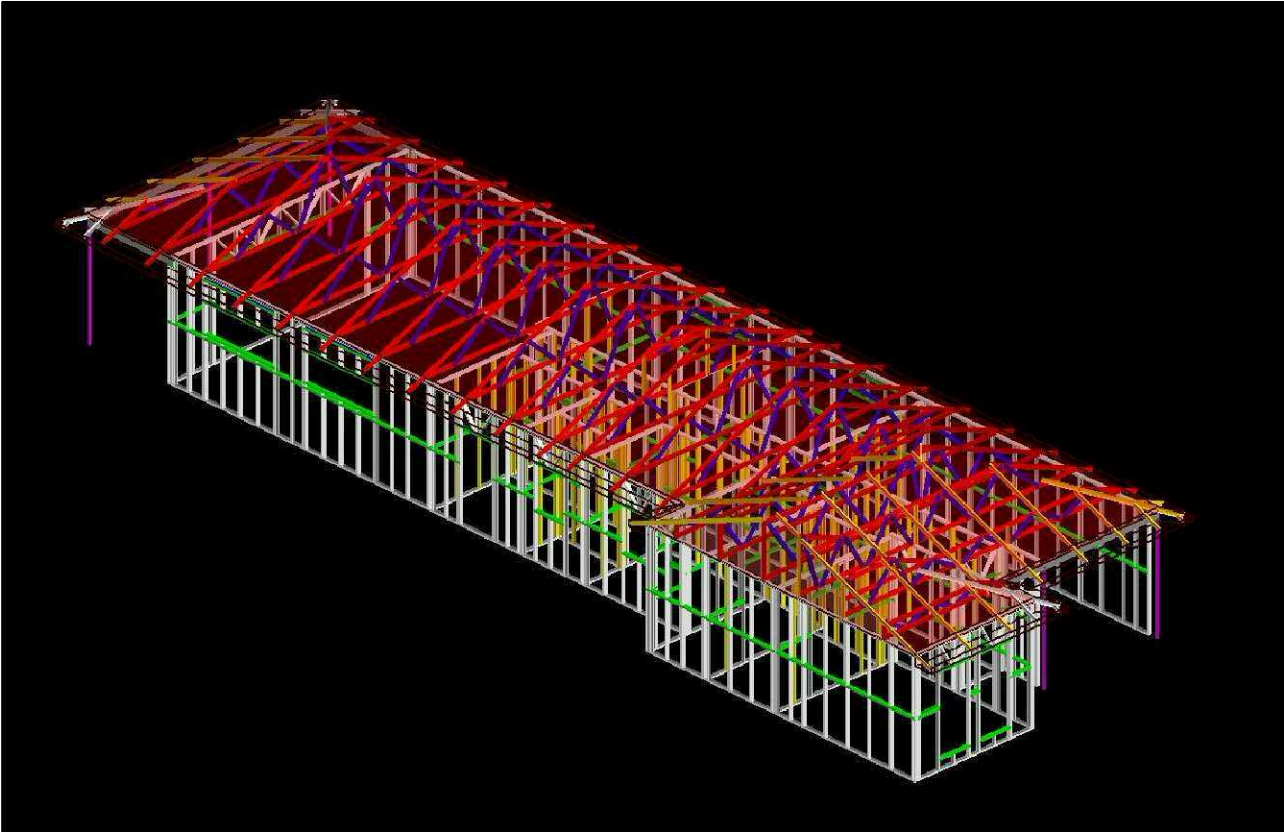
WALL FRAME LAYOUT GROUND FLOOR PLAN
DW2 14 BAKER AVE MORPHETTVILLE TSF-4262 - BERT FARINA CONSTRUCTIONS

WINDSPEED:	N1	DETAILED BY:
WALL THICKNESS:	90mm	Jarrood
L.B.W HEIGHT:	2745mm	CHECKED:
N.L.B.W HEIGHT:	2710mm	rebecca
EXTERNAL CLADDING:	BRICK	

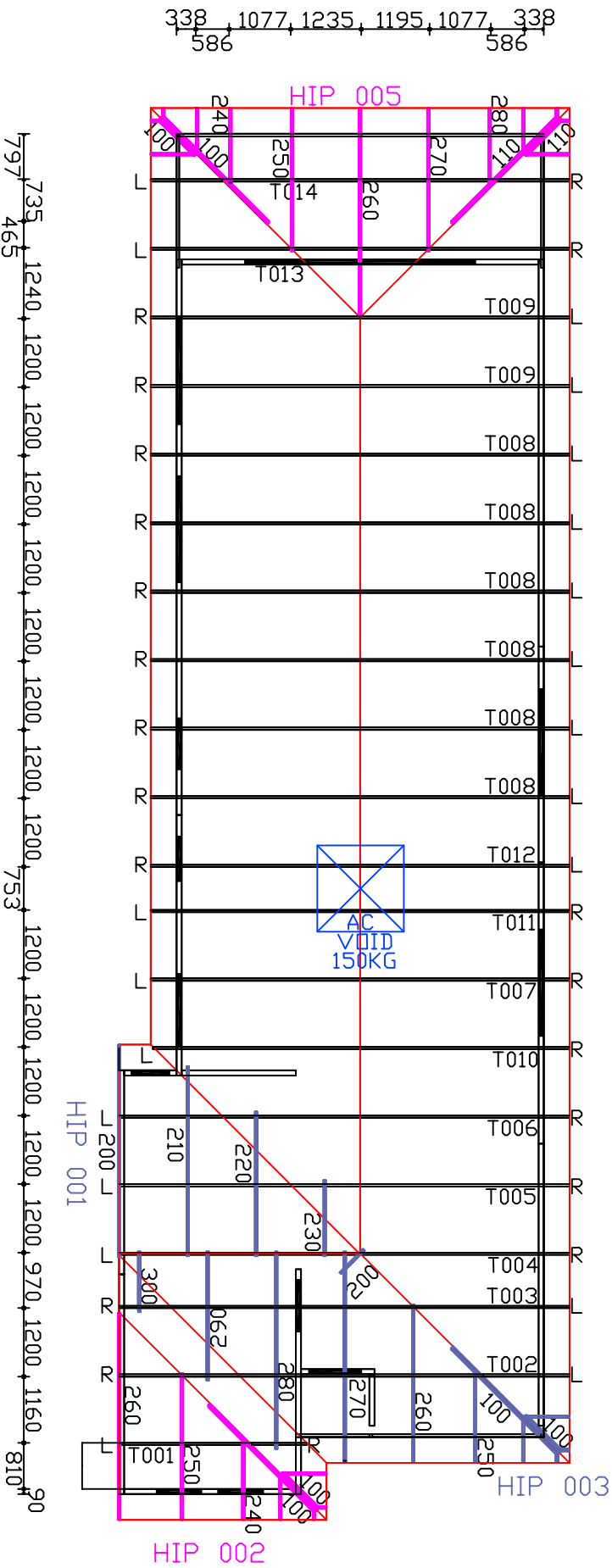
SHEET LEGEND

L - R DENOTES THE ORIENTATION OF THE TRUSS

AC VOID LOADED UP TO 150KGS
TO BE SHARED OVER TWO TRUSSES



NOTE:
All Web Rails/Internal Chords/Chord other require lateral restraints (Top Span 40 or C7575ra) to be provided at 1.8m max spacing and braced to ceiling plane



NO.	DATE:	BY:	REVISION:
1			
2			
3			
4			



31 HEWITTSON RD, EDINBURGH NORTH 5113
SITE ENQUIRIES - Ph: (08) 8252 0046

TRUSS LAYOUT GROUND FLOOR PLAN	WINDSPEED: N1		DETAILED BY: Jarrod
	ROOF TYPE: SHEET		
	ROOF PITCH: 22 Degrees		CHECKED: rebecca
	SECTION TYPE: U9075		
DW2 14 BAKER AVE MORPHETTVILLE TSF-4262 - BERT FARINA CONSTRUCTIONS	ROOF FEATURES:		

SHEET LEGEND

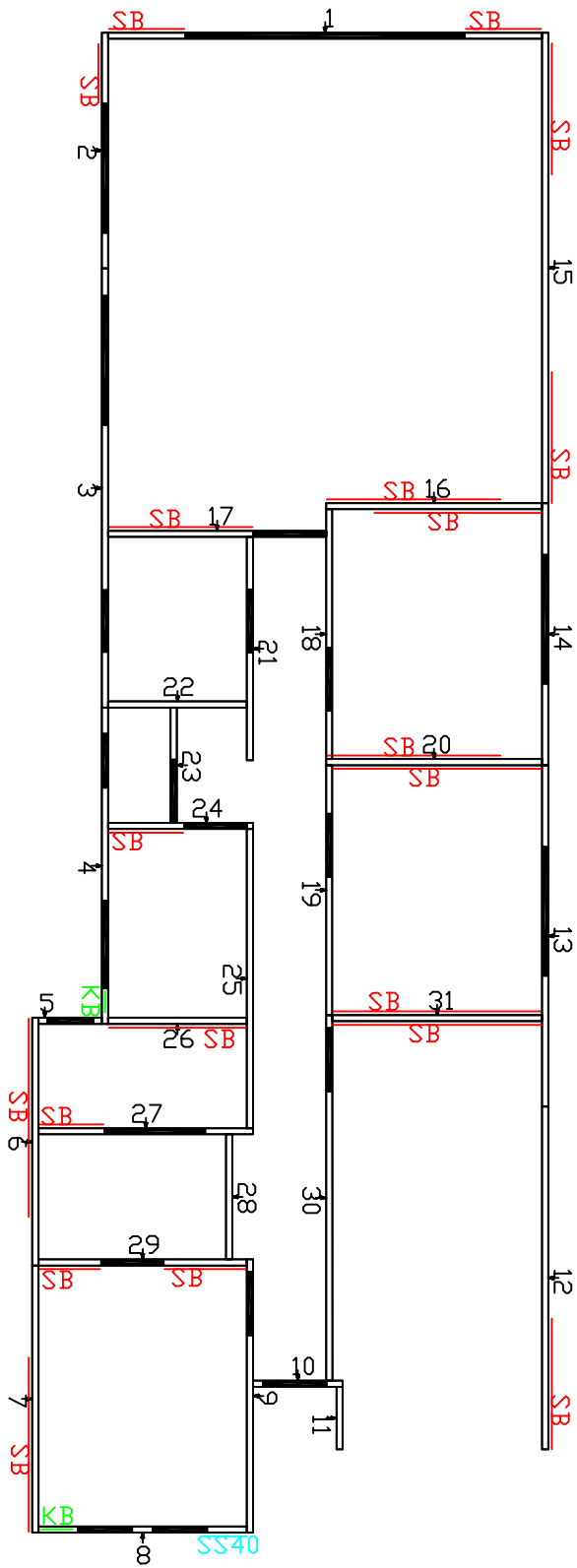
SB = 1.0x30x550 STRAP BRACE ON FRAME FACE


KB = 0.75 GAUGE K-BRACE WITHIN FRAME

SS40 = 0.42 PANEL BRACE FOR SHEET BRACING OR EQUIVALENT

ADDITIONAL NOTES

- ARROWS SHOW THE DIRECTION THE WALLS ARE VIEWED FROM
- STRAP BRACING IS TO BE INSTALLED ON THE SIDE OF A FRAME HIGHLIGHTED ON THE PLAN



NO.	DATE:	BY:	REVISION:	<div><p>31 HEWITTSON RD, EDINBURGH NORTH 5113 SITE ENQUIRIES - Ph: (08) 8252 0046</p></div>	<div>WALL BRACING LAYOUT GROUND FLOOR PLAN</div> <div>DW2 14 BAKER AVE MORPHETTVILLE TSF-4262 - BERT FARINA CONSTRUCTIONS</div>	WINDSPEED:	N1	DETAILED BY:	Jarrod
1						WALL THICKNESS:	90mm		
2						L.B.W HEIGHT:	2745mm	CHECKED:	rebecca
3						N.L.B.W HEIGHT:	2710mm		
4						EXTERNAL CLADDING:	BRICK		